

RWC2010M

ETI/MDI Player

FM RDS/AM Generator

Audio Analyzer

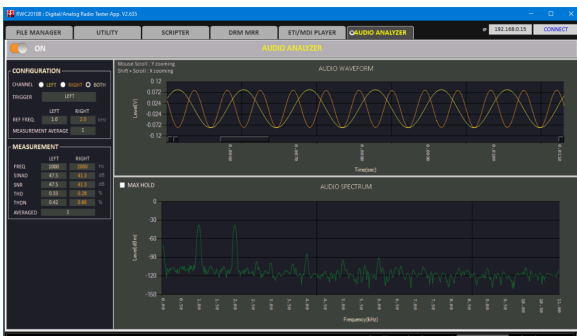


GENERAL DESCRIPTION

ETI (or MDI) files describe the characteristics of a signal suitable for transporting a full DAB Ensemble (or DRM Multiplex), where the ETI comprises a number of subchannels and a formatted Fast Information Channel (FIC) between a DAB Ensemble provider and a transmission network provider, and the MDI comprises a number of streams and a formatted Service Description Channel (SDC) between a DRM Multiplex provider and a transmission network provider. It means that if a specific broadcasting station's T-DMB/DAB (or DRM) signal is recorded as an ETI (or MDI) file, the recorded file contains all the information about the station. Using the RWC2010M's ETI/MDI player function with these files, specific broadcasting stations' T-DMB/DAB signals or DRM signals can be easily regenerated in labs.

The RWC2010M also provides analog functions as AM/FM transmission and audio analyzer. It also provides RDS functionality as a way to play pre-encoded RDS files.

It can be operated stand-alone, and also can be controlled and played with the RWC2010x PC application. The RWC2010x PC application provides various control and measurement functions such as file handling, AM/FM setting, remote controlling and gathering audio measurement data from RWC2010M. Audio measurement data includes SINAD, SNR, THD, waveform and spectrum.



KEY FEATURES

ETI/MDI

- Support ETI/MDI player
- Provide tone ETI/MDI files

FM RDS/AM Generator

- Support a single FM/AM transmission
- Support various Audio Modes (MONO / STEREO / WAV File / SWEEP)

Audio Analyzer

- Make it possible to test receiver sensitivity
- Audio measurement: SINAD / SNR / THDN
- Audio waveform and spectrum

File Play

- Stand alone playable
- PC application controllable

SPECIFICATION

Frequency

- LF/MF/HF Band: 149kHz to 30MHz
- BAND I/II/III: 47 to 68MHz, 76 to 108MHz, 174 to 250MHz
- Resolution: 1kHz
- Accuracy: ± 1.5 ppm/yr @ operating temperature

Output Level

- -10 to -110dBm (OFDM: -20 to -120dBm) for LF/MF/HF BAND
- 0 to -110dBm (OFDM: -10 to -120dBm) for BAND I/II/III
- Resolution: 0.1dB
- Accuracy: ± 1 dB

Output Level with RWC9500B (optional)

- +15 to -55dBm (CW/OFDM)
- Resolution: 0.1dB
- Accuracy: ± 1 dB

Audio Analyzer Characteristics

- Input Frequency: 0.1 to 20 kHz
- Input Range: Single Ended 2.25 Vrms
- Bandwidth: 20 kHz
- Common-Mode Rejection Ratio(CMRR): 56 dB
- Connection Type: 3.5 pi Stereo

VSWR

- Better than 1:1.5

Frequency Reference

- Internal Reference & Stability: 10MHz, $\pm 1.5\text{ppm/yr}$ @ operating temperature
- External Reference Input: 10MHz, 0 to +20dBm MAX.

Data IO Port

- Ethernet for Remote: RJ45
- RS232 for Remote: D-sub 9
- Data IO: RJ45

Miscellaneous

- Operating temperature: 5 to 40°C
- DC Power: 12V/3A VDC
- Dimension: 200(W) x 70(H) x 220(D) mm
- Weight: 2.2kg
- Display: 2.8" gray OLED
- Internal storage: 256GB

* The specifications are subject to change without notice.

CONTACT

sales@redwoodcomm.com
<https://www.redwoodcomm.com/>

ORDERING INFORMATION

C2010M-00: Digital Radio Tester - Full Option
ETI/MDI Player, RDS/FM/AM Generator

C2010M-01: Digital Radio Tester - ETI+MDI
ETI/MDI Player

C2010M-02: Digital Radio Tester - ETI+Analog
ETI Player, RDS/FM/AM Generator

C2010M-03: Digital Radio Tester - MDI+Analog
MDI Player, RDS/FM/AM Generator

C2010M-04: Digital Radio Tester - ETI Only
ETI Player

C2010M-05: Digital Radio Tester - MDI Only
MDI Player

C2010M-06: Digital Radio Tester - Analog Only
RDS/FM/AM Generator

V1.13 / Feb 7, 2024